

Strath Union & University of Strathclyde

Student Partnership Agreement

Introduction

This Student Partnership Agreement (SPA) outlines how the University of Strathclyde and the Strathclyde Student Union (Strath Union) will work together in order to enhance the student experience at Strathclyde.

The SPA will promote bold and creative collaboration between students and staff, with the purpose of delivering positive change for students.

The SPA describes the processes within the University and Strath Union that enable student engagement and participation. This part will be reviewed and updated as required. As a way of working, priority action areas will be agreed on by the student experience committee.

The SPA is the responsibility of the Student Experience Committee, which is chaired by the Strath Union President and reports to the University's Education Strategy Committee.

Our goal

Strathclyde is a socially progressive, international technological university. The student voice is vital in developing and enhancing the quality of the learning experience.

Strath Union is the home of students at Strathclyde, driven by democratically elected student representatives accountable to their peers. Its mission is to improve the lives of students by campaigning and advocating on issues that are of concern to students.

Through this agreement, the University and Strath Union will involve and respect student's opinions in decision-making at all levels of the institution to improve the student experience.

Core Values and Guiding Principles

Our SPA recognises that students and staff both have equal roles in quality enhancement and in ensuring an outstanding learning experience, although we exist as two different organisations. The Strathclyde Student Partnership is underpinned by six guiding principles that are shared across the Strathclyde community.

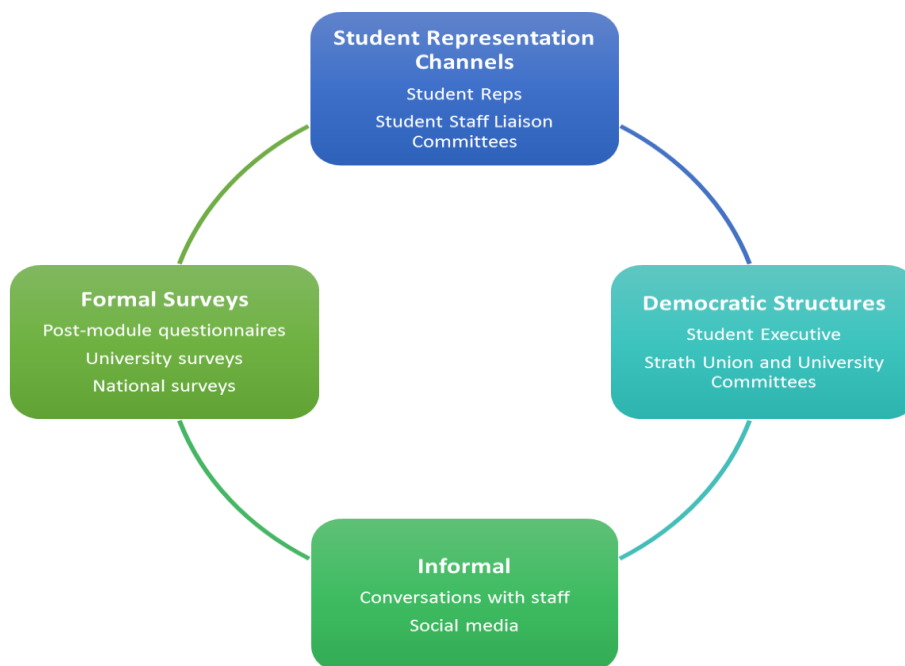
- As a diverse and socially progressive university, we actively respect and value all.
- We are ambitious about improvements in education and learning.
- We aim to provide the best learning environment that is creative and fun.
- We aim to provide a supportive and healthy environment for students and staff.
- Our founding mission as a 'Place of Useful Learning' informs our focus on employable skills and life fulfilment.
- We are community oriented, value our city and work towards environmental sustainability and increasing our social impact locally and globally.
- We will respect the varying approaches to work as set out by each organisation.

STRUCTURES, PROCESS, STUDENT ENGAGEMENT AND REPRESENTATION

Active Partnership and Communication

Students and staff are equal partners in decision-making on the student experience. The SPA promotes engagement with formal and informal opportunities for students and staff to work together.

There are several channels for students to ask questions and feedback on their module, course, department and the wider university.



The University will work in partnership with Strath Union to facilitate student engagement in Department and School groups, forums, committees and societies. Actively monitoring the effectiveness of these established channels through a continuous improvement approach will ensure that our system continues to evolve to meet the needs of our learning community.

Student Engagement

University Strath Union Structures

Our partnership activity is facilitated through the participation of student representatives in the University's formal governance structure.

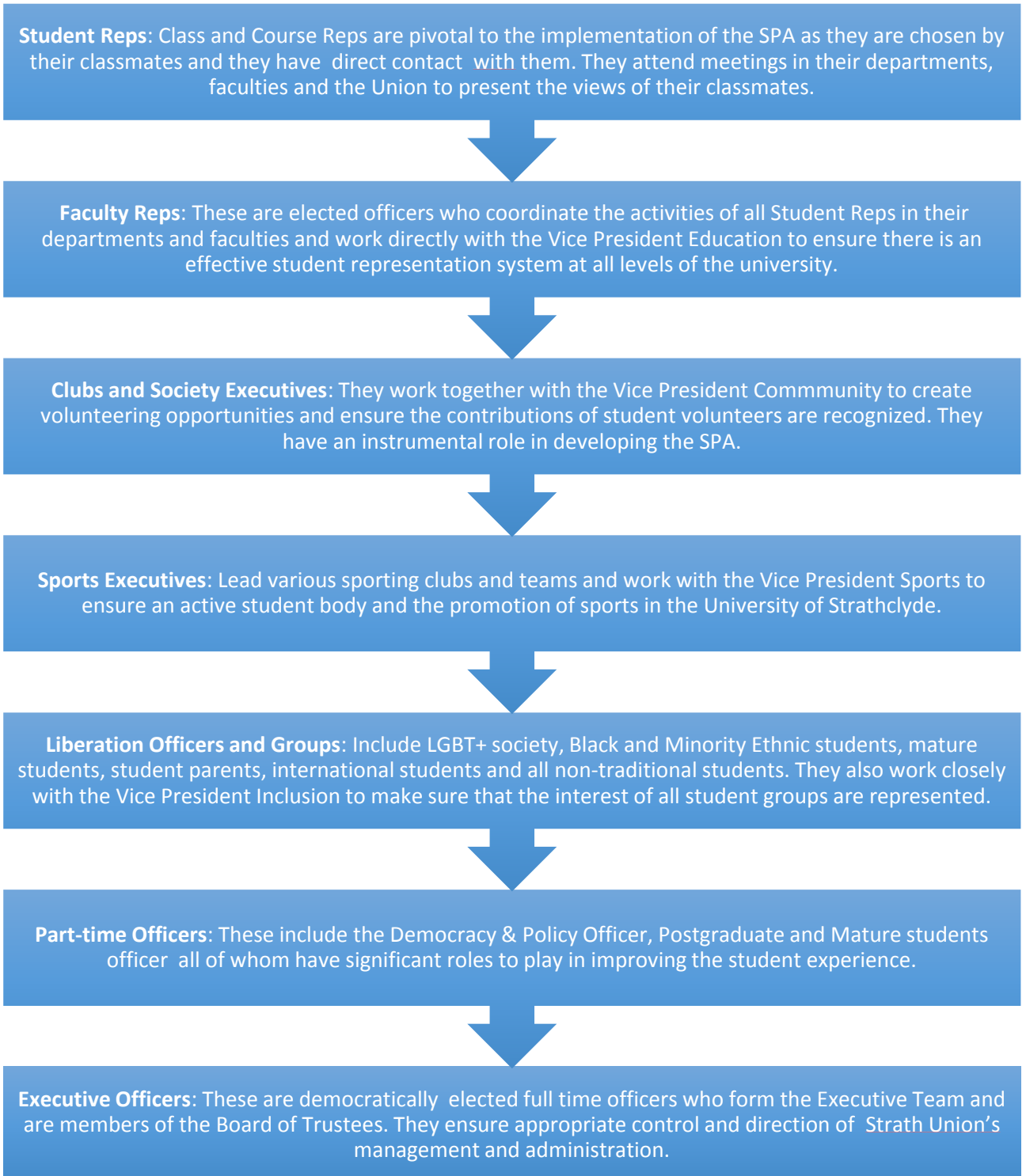
University committees and their Strath Union equivalents:

Strath Union	Level	University of Strathclyde
Board of Trustees Student Parliament	Governance	University Court University Senate
Executive Team	Executive	Executive Team
Faculty Reps	Faculty, Departments & Schools	Faculty, Department & School Management Teams
Student Reps	Class, Course, liberation and representation Level	Staff
Students	Individual Level	Staff

Student Experience internships also provide opportunities to influence University policy and practice. Student Experience interns will be recruited in partnership with Strath Union and will work collaboratively with staff and students to deliver enhancement projects and policy development. Student interns work to ensure that the student voice is at the heart of our engagement with QAA Enhancement Themes and policy development, alongside informing good practice guides for staff.

Student Engagement

Strath Union Representative Structure:



All student representatives in the above structure support sabbatical officers at varying levels, to improve the student experience. As an organisation, that primarily exists to promote the general interests of students, our activity and involvement is solely driven by the needs and concerns of our students. All representatives have a duty of responsibility to advocate and campaign on all concerns of students.