



24.11.2022

GENERAL MEETING 2

SIGN IN



Strath**ACTIVE**

What is StrathACTIVE?

- StrathACTIVE is a FREE social sport and active health programme.
- StrathACTIVE is open students & staff of all abilities, no matter if you are trying sport for the first time or wish to just play socially then StrathActive is the place for you
- We have activities on offer such as Badminton, Dodgeball, Indoor Football and Tennis with 3v3 Basketball coming in semester 2.
- No equipment needed, simply turn up and play!

How to sign up?

- Visit StrathUnion website and sign up for each session you wish to attend.



Contact:

lee.gallacher@strath.ac.uk

GET StrathACTIVE****

ENHANCING ENGAGEMENT COMPETITION



Presented by Societies Exec



Text on Webpages

When putting information about your society on the union website, please be mindful of the requirements for accessibility tools.

The accessibility tools cannot read Canva/graphics

Posters and artwork can still be used but please copy the text below it so people can access the information. This also helps when the images cannot load for any reason.

About us

ART & CRAFTS
what we do

ART SOCIETY IS WHERE PEOPLE OF ALL ABILITIES GET CREATIVE AND HAVE FUN!

OUR REGULAR PAINT N' SIPS ARE HELD ON THE LAST TUESDAY OF EVERY MONTH, 6.30-8.30PM
LOCATION: CONCOURSE AREA, LEVEL 1, THE UNION, 51 RICHMOND STREET

YOU CAN BRING YOUR OWN PROJECTS TO CREATE AND SOCIALISE IN A FRIENDLY ENVIRONMENT OR USE RESOURCES PROVIDED.

WE TRY DIFFERENT ART FORMS THROUGHOUT THE YEAR, FROM POTTERY CLASSES TO LIFE DRAWING, AND MORE. THERE ARE SOCIAL EVENTS, LOCAL GALLERY VISITS, WORKSHOPS, AND POTENTIAL TRIPS UPCOMING!

KEEP UP TO DATE AND ASK ANY QUESTIONS AT:
STRATHART AND CRAFTS SOCIETY

STRATHART SOCIETY@GMAIL.COM

@STRATHART CRAFTS

Committee

Ashema Kaur Secretary	Neemi Cantrell Washington Chairperson	Shreyx Ghimire President
Zainab Muir Treasurer	Bibbi Anderson Marketing and Publicity Officer	

NATIVE SWITCHOVER

WHAT THIS MEANS FOR YOU?

Must attend a training online!

You can find it at: [Training and Workshops \(strathunion.com\)](https://strathunion.com/training-and-workshops).

December 1st

WHAT IS NATIVE?

A platform for advertising our events and selling your tickets online.

You can add and manage your own tickets without having to get Union staff to do so.

TERRACE

ROASTERS

DISCOUNT CARDS



COMMON

GROUND



How can you get them

Log 2 hours on the Volunteering Portal on the Union Website.

We recommend those two hours being spend doing the committee training and finance training.

Pick them up from the Welcome desk Monday-Friday 2-4pm!



What they get you

10% off all food and drink in the union. *

* No discount on already discounted items or alcohol.



Presented by Societies Exec

WHAT A SUCCESSFUL GRANT APPLICATION LOOKS LIKE

- Retrospective grants,
- Part-funding,
- Comparative costing,
- Conversion rates if not in pounds,
- Plenty of notice, more than 2 weeks

RE-FRESHERS

WHAT YOU CAN DO



REQUEST STALL



PROMOTE YOUR
SOCIETY



ENGAGE WITH
NEW STUDENTS

EMAIL: STRATHUNION.SOCIETIES@STRATH.AC.UK

ACTIVE AND ENGAGED

All information is on the societies resource page

BRONZE

- Bronze badge on Strath Union website
- Shout out in Societies Newsletter

SILVER

- Silver badge on Strath Union website
- Shout out in Societies Newsletter
- Shout out on Strath Union social media
- Immediate £15 added to savings account

GOLD

- Gold badge on Strath Union website
- Shout out in Societies Newsletter
- Shout out in All Student Newsletter
- Shout out on Strath Union Social media
- Society spotlight story shared on Strath Union website
- Free photography at one of your events/committee headshots
- Immediate £30 added to savings account
- Immediate entry into £500 Prize Draw

MINI-BADGES

Mini badge assigned to each category criteria met.

Will be displayed on societies page.



SOCIETIES POLICY

PLEASE FEEDBACK ON WHAT
TO CHANGE



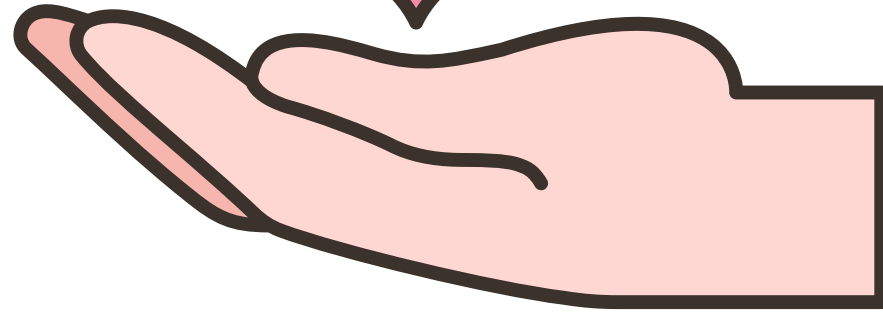
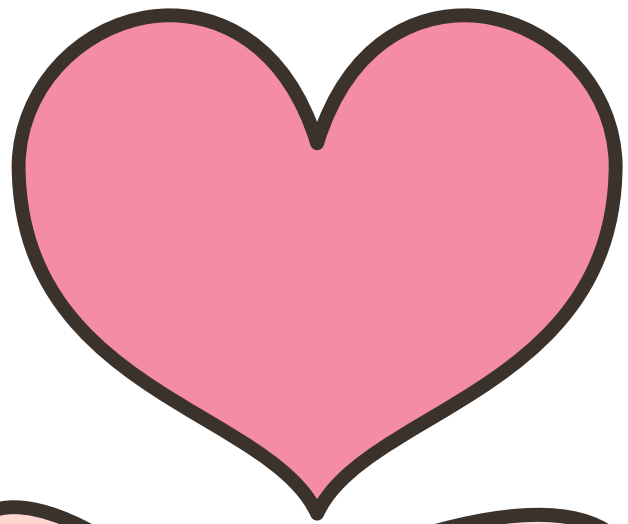
CHRISTMAS

SOME CHRISTMANS INFORMATION

FOODBANK

Donations accepted at welcome
desk from now until the end of
December

Available for Collection from
December 1st



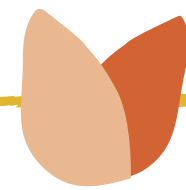


TOY DRIVE

LIST OF ACTIVITIES

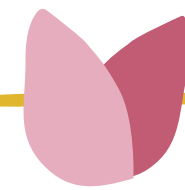


SUPPORTING STUDENT PARENTS



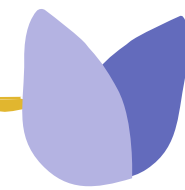
DONATE

At the Welcome Desk
and the Library



PICK UP

From 14th December,
toys can be picked up.



VISIT THE WEBPAGE

For more info visit:
<https://www.strathunion.com/events/event/4150/>



market from 12-6



Request a Christmas Market Stall*

*Disclaimer: Selling things, like a market stall. Not a society stall!

EMAIL: STRATHUNION.SOCIETIES@STRATH.AC.UK



CHRISTMAS LIGHT SWITCH ON

MONDAY 28TH NOVEMBER
5PM

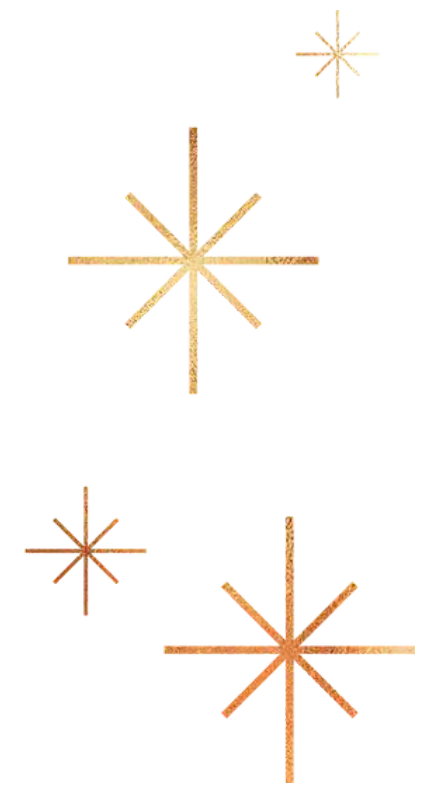


Strathclyde
Students'
Union



**WANNA GET INVOLVED
IN THE UNION'S
CHRISTMAS
PROGRAMME ANOTHER
WAY?**

Email Lisa Brennan:
lisa.brennan@strath.ac.uk



Santa Dash 2022

SIGN UP:

- Registration Closes 9th December 4pm.
- Use link to register.

BEATSON:

- Will be selling merch in the Union on the 11th of December.
- There will be free mulled wine and mince pies.

Glasgow Santa Dash

Glasgow Green
Sunday 11 December, from 10am
Registration closes at 4pm
on Friday 9 December



Register here

ENTRY
£15 Adults
£5 Under 16

Profits will be split between
Beatson Cancer Charity and the
Lord Provost's Children's Fund.



Register at www.glasgow.gov.uk/santadash

Beatson Christmas Bucket Collections

CHRISTMAS COLLECTIONS

Saturday 19th & Sunday 20th November
Glasgow Fort 10am-4pm

Tuesday 29th November
Glasgow Central Station 10am-4pm

Thursday 1st December
Braehead 10am-4pm

Friday 2nd December
Silverburn 10am-4pm (6-8pm also available)

Saturday 3rd December
St Enoch Centre 1pm-5pm

Sunday 4th December
Braehead 10am-4pm
St Enoch Centre 1pm-5pm

Monday 5th December
St Enoch Centre 1pm-5pm

Tuesday 6th December
St Enoch Centre 1pm-5pm

Wednesday 7th December
St Enoch Centre 1pm-5pm

Thursday 8th December
Silverburn 10am-4pm (6-8pm also available)

Friday 9th December
Silverburn 10am-4pm (6-8pm also available)

Monday 12th December
Silverburn 10am-4pm (6-8pm also available)

Thursday 15th December
Silverburn 10am-4pm (6-8pm also available)

Friday 16th December
Merchant Square 12-5pm
Glasgow Airport 11am-4pm

Saturday 17th December
Glasgow Central Station 10am-4pm
Glasgow Airport 11am-4pm

Sunday 18th December
Braehead 10am-4pm
Silverburn 10am-4pm (6-8pm also available)
Glasgow Airport 11am-4pm



If you can spare an hour to perform at any of these dates,
we would love to have you ☺
Simply email community@beatsoncancercharity.org with your availability.
We will confirm your chosen slot is free and book you in!



We're with you

Contact email: community@beatsoncancercharity.org



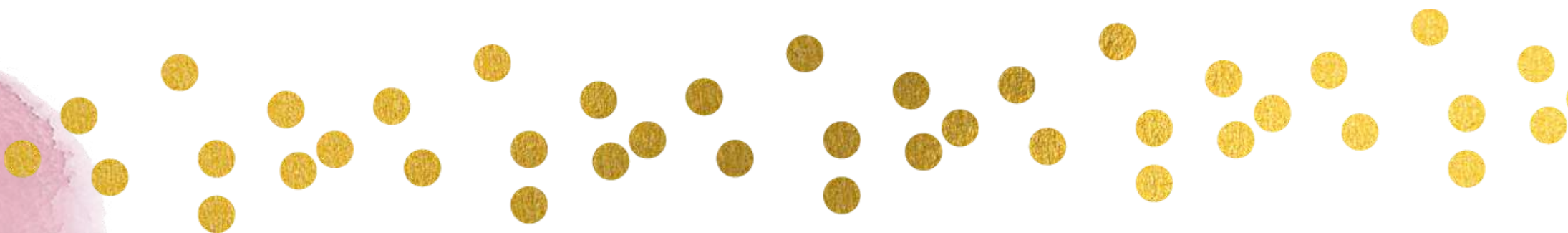
BACK TO SOCIETIES



WE STRIVE!

**WE STRIVE TO EMAIL YOU BACK
WITHIN 3 WORKING DAYS!**

Please be conscious that we are a small team, and it is not always possible to adhere to the 3 day deadline.





***SHOULD THERE BE
A SOCIETIES BALL?***

Yes

No

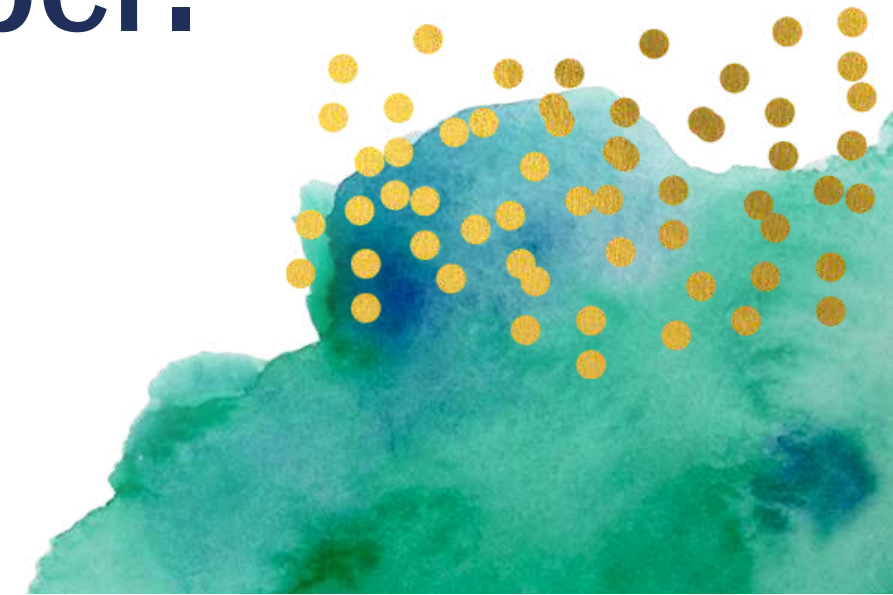


ELECTIONS



Strathclyde
Students'
Union

**We are holding by-
elections in the January
GM for a new societies'
exec member.**



STRIKES

Disruption to room bookings
in the University Wednesday
30th November.

INTERSOC REPRESENTATIVE PROJECT

Reminder of assigned Societies Exec Members

POLITICAL AND ACTIVISM.....BENN

HOBBIES & INTERESTS.....JAMIE

COURSE BASED.....SHEIK

FAITH AND CULTURE.....SHREYA

COMMUNITY.....EMMA

MEDIA, ARTS & MUSIC.....JUSTYNA (TEMPORALILY)

Visit [mentimeter.com](https://www.mentimeter.com)



Participation code: 1810 2402

TELL US HOW WE CAN IMPROVE?

**LET US KNOW HOW WE CAN MAKE
THE INTERSOC REP WORK FOR YOU!**



THANK YOU!

ANY QUESTIONS?